

STATE OF ALABAMA §

LAUDERDALE COUNTY §

The Lauderdale County Commission convened at the Lauderdale County Government Building in the City of Florence, Alabama, at 5:00 p.m. on the 12th day of May, 2025.

The meeting was called to order by Chairman, Danny Pettus. Upon roll call the following members answered present:

Danny Pettus	Chairman
Roger Garner	Commissioner, District 1
Brad Black	Commissioner, District 1
Joe Hackworth	Commissioner, District 2
Todd Nix	Commissioner, District 2

Chairman, Danny Pettus, upon declaration of a quorum being present, opened the meeting for the transaction of business.

The invocation and Pledge of Allegiance were delivered by Commissioner, Brad Black.

Award/Presentations: None

Public Comments on Agenda Items: None

Commissioner Black moved, seconded by Commissioner Hackworth that all items listed on the regular business agenda be approved for immediate consideration. There being no discussion, and upon a vote taken, motion was unanimously approved. Agenda is herein recorded, and made a part of these minutes.

Commissioner Nix moved, seconded by Commissioner Garner that the minutes of the last regular meeting of the Commission be approved for recording. There being no discussion, and upon vote taken, motion was unanimously approved.

Commissioner Black moved, seconded by Commissioner Garner to approve out of state travel for one employee in the Sheriff's Department. There being no further discussion, and upon a vote taken, motion was unanimously approved. This Resolution is herein recorded, and made a part of these minutes.

Commissioner Nix moved, seconded by Commissioner Black approving relocating the temporary electrical meter and transformer at the Workforce Development Center as well as using Southeast Technologies for security/access controls at the Workforce Development Center. There being no further discussion, and upon a vote taken, motion was unanimously approved. This Resolution is herein recorded, and made a part of these minutes.

Commissioner Hackworth moved, seconded by Commissioner Garner to approve Family Medical Leave of Absence for one employee at the Lauderdale County Jail. Brooke Slatton, County Administrator stated that all of the paperwork is in order for the employee to take FMLA. There being no further discussion, and upon a vote taken, motion was unanimously approved. This Resolution is herein recorded, and made a part of these minutes.

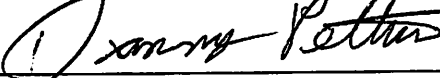
Commissioner Garner moved, seconded by Commissioner Black approving the invoiced bills. There being no further discussion, and upon a vote taken, motion was unanimously approved. This is herein recorded, and made a part of these minutes.

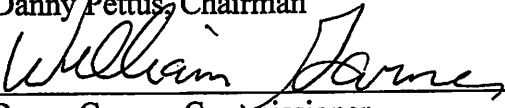
LAUDERDALE COUNTY CHECKS ISSUED:		
April 28, 2025 - May 11, 2025		
1 .	General-Special	63247-63288
		753,901.27
2 .	Agri-Business Fund	4165-4167
		485.83
3 .	Pistol Permit Revenue Reduction Fund	N/A
		0.00
4 .	Opioid Settlement Fund	1118-1122
		2,472.87
5 .	LEPA Fund	9346-9351
		4,522.45
6 .	Gasoline Tax Fund	19293-19302
		239,276.13
7 .	Public Bldg., R & B Special	N/A
		0.00
8 .	Public Highway & Traffic Fund	N/A
		0.00
9 .	Al. Trust Capital Improvement Fund	397-398
		43,265.91
10 .	RRR Gasoline Tax Fund	772
		80,262.83
11 .	Reappraisal Fund	13029-13035
		30,867.06
12 .	Tourism, Rec. & Convention Fund	655-656
		4,399.00
13 .	RSVP Fund	18522-18527
		2,382.96
14 .	Child Protection Fund	N/A
		0.00
15 .	Rebuild Alabama Gas Tax Fund	N/A
		0.00
16 .	Rebuild Alabama Diesel Tax Fund	N/A
		0.00
17 .	Federal Aid Exchange Fund	N/A
		0.00
18 .	Workforce Development Center Fund	1146
		679,454.15
19 .	Special Grants Fund	1025
		6,000.00
20 .	Coronavirus Rescue Act Fund	N/A
		0.00
21 .	CDBG Fund	N/A
		0.00
22 .	Solid Waste Fund	9871-9882
		178,257.24
23 .	Account Payable Fund	49923-49999
		949,878.24
24 .	Fire Protection Fee Fund	N/A
		0.00
25 .	Industrial Development Tax Fund	1260
		617,474.07
26 .	Tobacco Tax Fund	3217
		10,800.00
27 .	TVA Tax Fund	N/A
		0.00
TOTAL		\$ 3,603,700.01

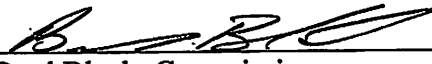
Eric Grigsby addressed the Lauderdale County Commission concerning the sale of addictive substances in certain gas stations in the county. Mr. Grigsby brought to light the selling of Boujee Bliss, a highly addictive product that he had personal experience using and recovering from. Mr. Grigsby noted that this product can cause kidney and liver failure, and a person can actually be charged with possession if they have this when pulled over by a police officer. Yet, it is allowed to be sold in convenience stores.

There being no further business to come before the Commission, and upon a motion made by Commissioner Garner and seconded by Commissioner Nix, the meeting was duly adjourned.

LAUDERDALE COUNTY COMMISSION


Danny Pettus, Chairman


Roger Garner, Commissioner


Brad Black, Commissioner

Absent
Todd Nix, Commissioner

ATTEST:


Brooke Slatton, County Administrator


Joe Hackworth, Commissioner

LAUDERDALE COUNTY COMMISSION
REGULAR MEETING AGENDA
May 12, 2025

A. OFFICIAL AGENDA

1. CALL TO ORDER AND WELCOME
2. CALL OF ROLL TO ESTABLISH QUORUM
3. INVOCATION AND PLEDGE OF ALLEGIANCE- Commissioner, Brad Black
4. AWARDS AND PRESENTATIONS
5. PUBLIC COMMENTS ON AGENDA ITEMS

Per Rules of Procedure there is a three-minute time limit

REGULAR BUSINESS

1. Review and Motion to Consider Agenda Items

2. Approve minutes of last meeting

3. Resolution—Out of State Travel

The Commission will vote on out of state travel for a Sheriff Department employee.

4. Resolution—Workforce Development Center

The Commission will decide on relocating a temporary electrical meter and transformer as well as using Southeast Technologies for security/access controls at the Workforce Development Center.

5. FMLA—Sheriff's Department

6. Audit and Approve Invoiced Bills

B. SCHEDULED PUBLIC HEARINGS—none

C. STAFF REPORTS

D. PUBLIC COMMENT PERIOD - Per Rules of Procedure, three-minute time limit

E. ADJOURN

STATE OF ALABAMA §
LAUDERDALE COUNTY §

RESOLUTION

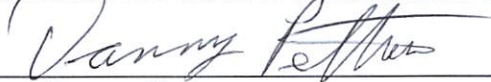
WHEREAS, the Lauderdale County Sheriff Department would like to request out of state travel approval for one employee; and

WHEREAS, the Lauderdale County Sheriff Department employee, Reggie Goodloe will be traveling to Franklin, Tennessee June 1st, 2025 through June 5th, 2025 for Region 22 K9 Celto Trials; and

THEREFORE, BE IT RESOLVED, the Lauderdale County Commission approves the Lauderdale County Sheriff Department out of state travel request listed above.

Done this the 12th day of May, 2025.

LAUDERDALE COUNTY COMMISSION



Danny Pettus, Chairman



Roger Garner, Commissioner



Brad Black, Commissioner



Todd Nix, Commissioner



Joe Hackworth, Commissioner

ATTEST:



Brooke Slatton, County Administrator

STATE OF ALABAMA §

LAUDERDALE COUNTY §

RESOLUTION

WHEREAS, Volkert, Inc. has requested the temporary electrical meter and transformer be relocated closer to highway 72 for safety reasons at the Workforce Development Center job site. The informational memo will be attached to the resolution in the minutes; and

WHEREAS, Volkert, Inc. is also proposing using Southeast Technologies out of Alabaster, Alabama for security/access controls at the Workforce Development Center. The quote for this service is attached to the resolution; and

THEREFORE, BE IT RESOLVED, the Lauderdale County Commission approves relocating the temporary electrical meter and transformer at the Workforce Development Center as well as using Southeast Technologies for security/access controls at the Workforce Development Center.

Done this the 12th day of May, 2025.

LAUDERDALE COUNTY COMMISSION



Danny Pettus, Chairman



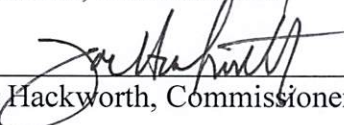
Roger Garner, Commissioner



Brad Black, Commissioner



Todd Nix, Commissioner



Joe Hackworth, Commissioner

ATTEST:



Brooke Slatton, County Administrator

Volkert, Inc.
1616 2nd Ave South
Suite 150
Birmingham, AL 35233
205-214-5500
www.volkert.com



May 8, 2025

Mr. Tyler Pigg
Senior Electrical Engineer
Florence Electricity Department
502 E Dr. Hicks Blvd.
Florence, Alabama 35630

RE: Lauderdale County Workforce Development Center – Temporary Power

Tyler,

In order to provide power for the main entrance lighting west of Lauderdale County Innovation Center and Lauderdale County Workforce Development Center, I would like to request that the temporary meter and transformer be removed from LCWD and relocated near Hwy 72. This will be used for the lighting and greatly assist in providing safety of the job site.

Thank you and please contact me if you have any questions or need any additional information.

Sincerely,

Sommer Coleman

Sommer Coleman
Senior Project Manager – Volkert, Inc.

Danny Pettus

Danny Pettus, Chairman
Lauderdale County Commission



Southeast Technologies

1520 Simmsville Road | Suite 1800 | Alabaster, Alabama 35007
205-846-8600 | Nick@southeasttechnologies.org

RECIPIENT:

Lauderdale County Workforce Development

Highway 72
Florence, Alabama

Quote #531

Sent on

Total

\$35,510.00

Product/Service	Description	Qty.
DW Spectrum License	DW Software Lic (One-Time)	31
DW736	DW Spectrum Server 36TB	1
8MPIP	8MP IP Camera Bullet/Dome/Turret	23
360IP	Fisheye 360 IP Camera	3
2LIP	Dual Lens IP Camera	3
MS20MP	20MP Multi Sensor Camera with 360	2
CAT 6 Drop	CAT6 Network Drop (Cabling for Interior Cams)	16
MISC		1
Installation		1
65" Viewing Station	Monitor for Camera Viewing -Mini PC -Wireless Keyboard/Mouse	1

* Non-taxable

Total

\$35,510.00

This quote is valid for the next 30 days, after which values may be subject to change.

Signature:

Date:

6-9-25



Southeast Technologies

1520 Simmsville Road | Suite 1800 | Alabaster, Alabama 35007
205-846-8600 | Nick@southeasttechnologies.org

RECIPIENT:**Lauderdale County Workforce Development**

Highway 72
Florence, Alabama

Quote #532

Sent on _____

Total **\$23,125.75**

Product/Service	Description	Qty.
Access Control		
RCNE	PDK Red Cloud Node	1
R1	PDK Red 1 Door Controller	1
R4	PDK 4 Door Controller	2
RGRGRK	PDK Single Gang Rugged Reader	6
Electric Strike	Electric Strike/Locking Hardware	4
Composite Cable	Access Control Composite Cable (per foot)	1050
DPS	Door Position Sensor (Generic)	17
Installation	Installation	1
MISC	MISC Materials	1
PDK Cloud Hosting	Cloud Hosting Annual Fee	6

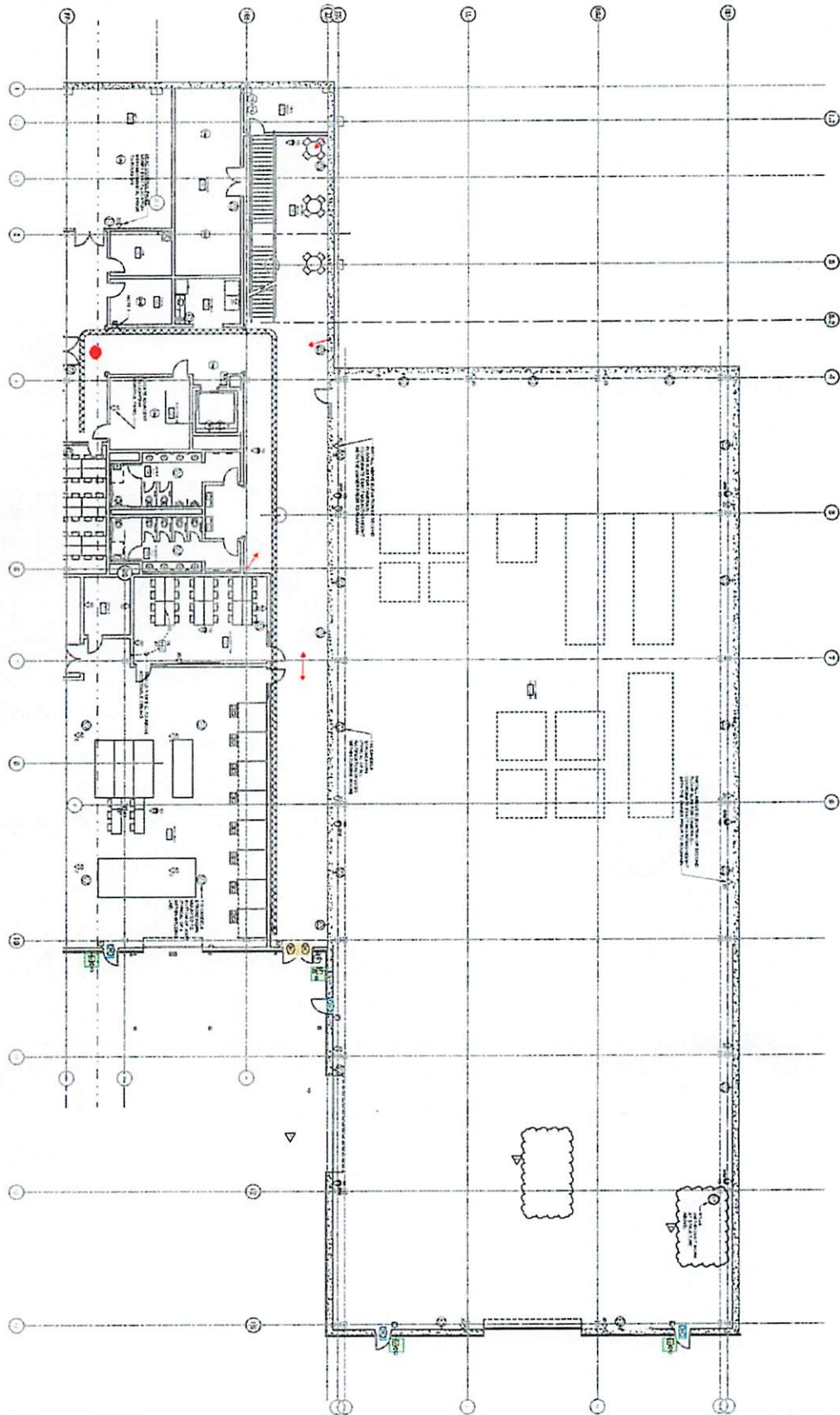
* Non-taxable

Total **\$23,125.75**

This quote is valid for the next 30 days, after which values may be subject to change.

Signature: _____

Date: 6-9-25



LEVEL 1 - AUXILIARY PLAN - PART A

NOTES: THIS SHEET IS A PART OF THE PROJECT. IT IS NOT TO BE USED SEPARATELY FROM THE OTHER SHEETS OF THE PROJECT. IT IS THE RESPONSIBILITY OF THE USER TO ENSURE THAT ALL NECESSARY INFORMATION IS OBTAINED FROM THE OTHER SHEETS OF THE PROJECT.



LEVEL 1 - AUXILIARY PLAN - PART A

E3.01

LAUDERDALE COUNTY WORK DEVELOPMENT CENTER
LAUDERDALE COUNTY

GMC # ABH200035

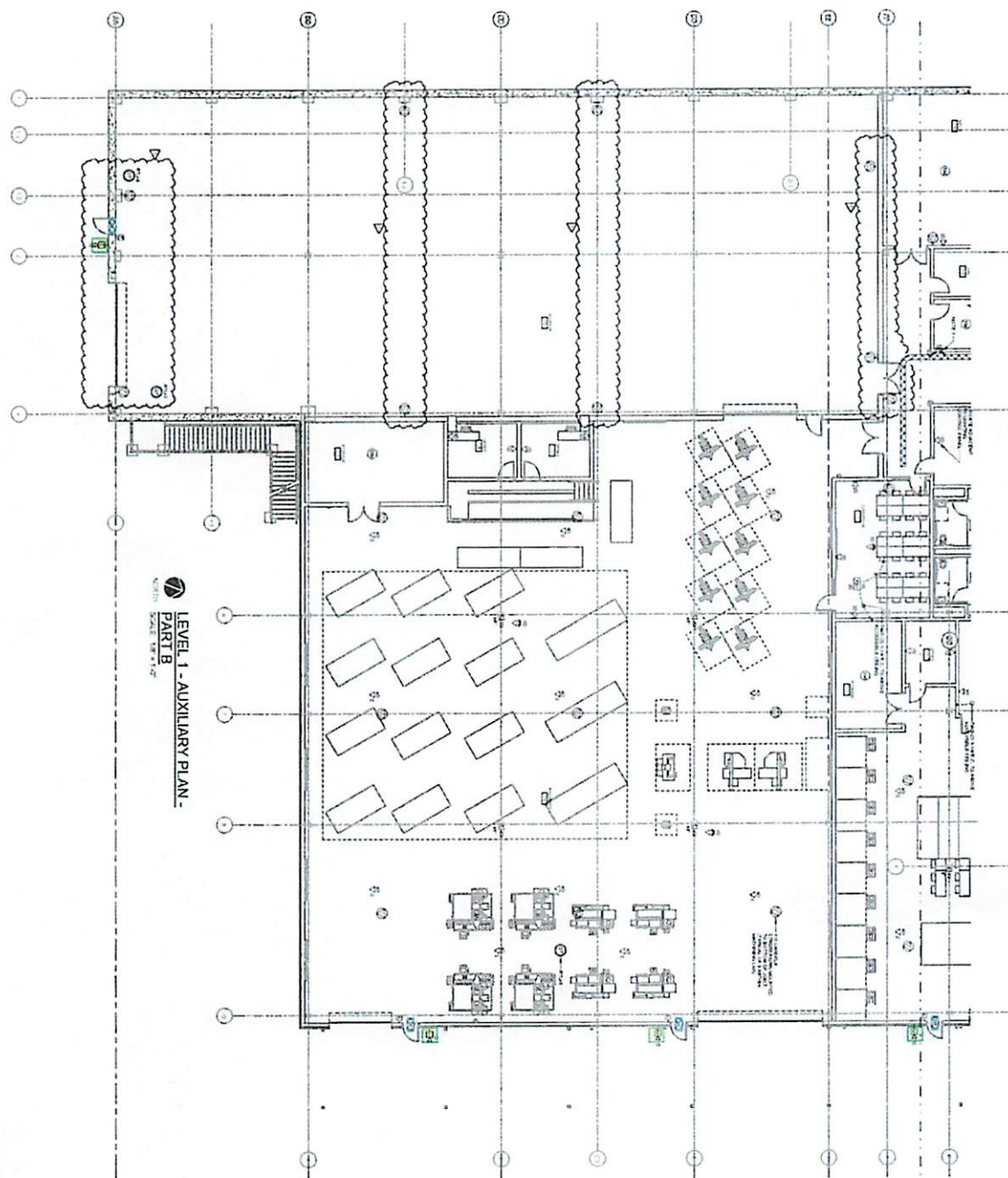
ISSUE | DATE

REVISED 06/18/2024
REVISED 07/07/2024
REVISED 08/11/2024

DRAWN BY: KRS
CHECKED BY: KRS

2701 1st Avenue South
Birmingham, AL 35233
T 205.879.4462
RHCRTWORKS.COM

GMC



LEVEL 1 - AUXILIARY PLAN -
PART B



LEVEL 1 - AUXILIARY
PLAN - PART B

E3.02



LAUDERDALE COUNTY WORK DEVELOPMENT CENTER
LAUDERDALE COUNTY

GMC# ABHM200225

ISSUE DATE

1	05/14/2023
2	05/14/2023
3	05/14/2023
4	05/14/2023
5	05/14/2023
6	05/14/2023
7	05/14/2023
8	05/14/2023
9	05/14/2023
10	05/14/2023
11	05/14/2023
12	05/14/2023

2701 1st Avenue South
Birmingham, AL 35233
T 205.879.4462
GMCNETWORK.COM

GMC



LEVEL 2 - AUXILIARY PLAN -
PART A

NOTES THIS SHEET ONLY

五

**Using Kyma in
Studio**
Kyma is a powerful
audio processing
plugin that can be
used in a variety of
ways. It can be used
as a standalone
application, or it can
be used as a plugin
in a DAW. It can be
used to create
complex sounds, or
it can be used to
process existing
sounds. It can be
used to create
reverb, delay, and
other effects. It can
be used to create
new instruments,
or it can be used to
process existing
instruments. It can
be used to create
new sounds, or it
can be used to
process existing
sounds. It can be
used to create
new instruments,
or it can be used to
process existing
instruments. It can
be used to create
new sounds, or it
can be used to
process existing
sounds.

LEVEL 2 - AUXILIARY
PLAN - PART A

E3.03

LAUDERDALE COUNTY WORK DEVELOPMENT CENTER
LAUDERDALE COUNTY

GMC # ABPM2000JS

ISSUE	DATE
1	1/1/1980
2	1/1/1981
3	1/1/1982
4	1/1/1983
5	1/1/1984
6	1/1/1985
7	1/1/1986
8	1/1/1987
9	1/1/1988
10	1/1/1989
11	1/1/1990
12	1/1/1991
13	1/1/1992
14	1/1/1993
15	1/1/1994
16	1/1/1995
17	1/1/1996
18	1/1/1997
19	1/1/1998
20	1/1/1999
21	1/1/2000
22	1/1/2001
23	1/1/2002
24	1/1/2003
25	1/1/2004
26	1/1/2005
27	1/1/2006
28	1/1/2007
29	1/1/2008
30	1/1/2009
31	1/1/2010
32	1/1/2011
33	1/1/2012
34	1/1/2013
35	1/1/2014
36	1/1/2015
37	1/1/2016
38	1/1/2017
39	1/1/2018
40	1/1/2019
41	1/1/2020
42	1/1/2021
43	1/1/2022
44	1/1/2023
45	1/1/2024
46	1/1/2025
47	1/1/2026
48	1/1/2027
49	1/1/2028
50	1/1/2029
51	1/1/2030
52	1/1/2031
53	1/1/2032
54	1/1/2033
55	1/1/2034
56	1/1/2035
57	1/1/2036
58	1/1/2037
59	1/1/2038
60	1/1/2039
61	1/1/2040
62	1/1/2041
63	1/1/2042
64	1/1/2043
65	1/1/2044
66	1/1/2045
67	1/1/2046
68	1/1/2047
69	1/1/2048
70	1/1/2049
71	1/1/2050
72	1/1/2051
73	1/1/2052
74	1/1/2053
75	1/1/2054
76	1/1/2055
77	1/1/2056
78	1/1/2057
79	1/1/2058
80	1/1/2059
81	1/1/2060
82	1/1/2061
83	1/1/2062
84	1/1/2063
85	1/1/2064
86	1/1/2065
87	1/1/2066
88	1/1/2067
89	1/1/2068
90	1/1/2069
91	1/1/2070
92	1/1/2071
93	1/1/2072
94	1/1/2073
95	1/1/2074
96	1/1/2075
97	1/1/2076
98	1/1/2077
99	1/1/2078
100	1/1/2079
101	1/1/2080
102	1/1/2081
103	1/1/2082
104	1/1/2083
105	1/1/2084
106	1/1/2085
107	1/1/2086
108	1/1/2087
109	1/1/2088
110	1/1/2089
111	1/1/2090
112	1/1/2091
113	1/1/2092
114	1/1/2093
115	1/1/2094
116	1/1/2095
117	1/1/2096
118	1/1/2097
119	1/1/2098
120	1/1/2099
121	1/1/2100
122	1/1/2101
123	1/1/2102
124	1/1/2103
125	1/1/2104
126	1/1/2105
127	1/1/2106
128	1/1/2107
129	1/1/2108
130	1/1/2109
131	1/1/2110
132	1/1/2111
133	1/1/2112
134	1/1/2113
135	1/1/2114
136	1/1/2115
137	1/1/2116
138	1/1/2117
139	1/1/2118

FC SET	04.08.202
--------	-----------

DRAWN BY	KRL
CHECKED BY	ECN

2701 1st Avenue South
Birmingham, AL 35233
T 205.879.4462
OMCHNETWORK.COM

GMC

E3.04

LEVEL 2 - AUXILIARY
PLAN - PART B



GMC # ABH20015

LAUDERDALE COUNTY WORK DEVELOPMENT CENTER

ISSUE	DATE

2701 1st Avenue South
Birmingham, AL 35223
T 205.879.4462
SECRETWORKS.COM

GMC

NOTE THIS SHEET ONLY!
THIS SHEET IS A PART OF A SET OF SHEETS. THE SHEET NUMBER IS INDICATED IN THE TOP RIGHT CORNER OF EACH SHEET. THE SHEET NUMBER IS ALSO INDICATED IN THE TOP RIGHT CORNER OF EACH SHEET. THE SHEET NUMBER IS ALSO INDICATED IN THE TOP RIGHT CORNER OF EACH SHEET.

LEVEL 2 - AUXILIARY PLAN -
PART B

SCALE: 1/8" = 1'-0"

